

# Enable hybrid work with Windows 365



## How and where we work has changed

**73%** of workers say they want flexible remote work options.<sup>1</sup>

**67%** of employees want more in-person collaboration.<sup>1</sup>

**80%** of managers expect more flexible work from home policies.<sup>1</sup>

## Hybrid work creates new opportunities and new challenges



**Onboarding and provisioning**  
Zero-touch approach to getting employees, vendors, and contractors up and running across a variety of devices and locations.



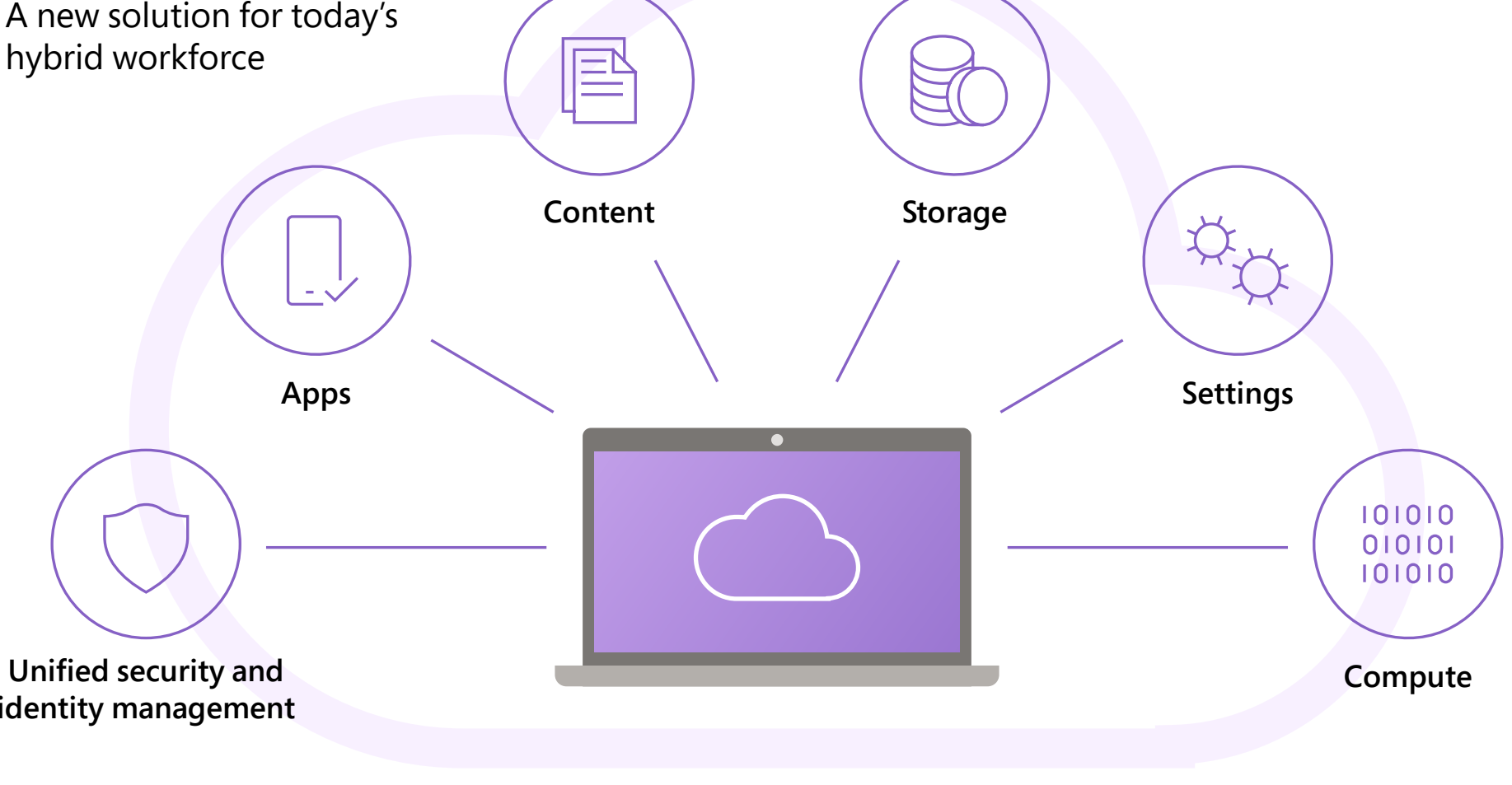
**Business continuity**  
Responding quickly to changing workplace situations to mitigate negative impact and seize opportunities.



**Security and regulation**  
Securing organizational and customer data while addressing growing complexity in compliance, without sacrificing productivity.

## Cloud PC category

A new solution for today's hybrid workforce



## Welcome to your Windows 365 Cloud PC

A new solution for today's hybrid workforce



- Your content** wherever you go
- Consistent settings** across devices
- Scalable storage** based on your needs
- Compute options** for different users
- The apps** you need, when you need them
- Integrated **unified security** & identity management

## Windows 365, your Windows in the cloud

### Loved by users

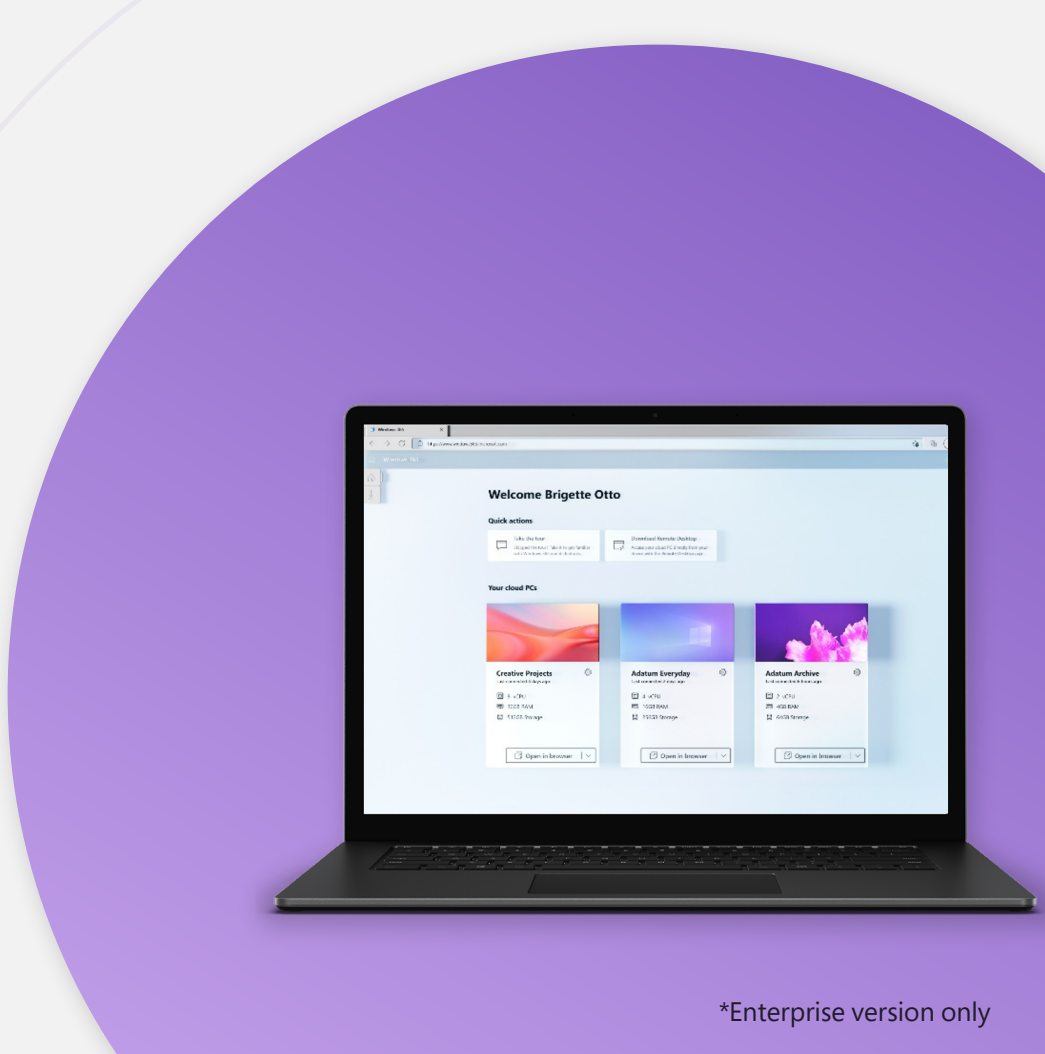
### Trusted by IT



- Streamed across devices
- Always ready and updated
- Personal and familiar
- Scalable and resilient
- Predictable costs
- Simple to buy, deploy, &

## Works seamlessly with Microsoft cloud services

- Azure Active Directory Identity
- Microsoft 365 Apps
- Microsoft Defender
- Microsoft Endpoint Manager\*



\*Enterprise version only

## Role-specific end user computing needs



### Information Workers

**Traditional**  
Information workers that use traditional desktop and laptop PCs, Win32 apps, and cloud services.

**Cloud**  
Information workers that prefer only cloud-based apps & services.



### Frontline Workers

**Mobile**  
Use phones and tablets running iOS or Android.

**Simple**  
Use inexpensive, lightweight, and web-based devices that are easy to use, deploy & manage.

**Versatile**  
Need flexibility & power, including support for Office, Win32 & specialized peripherals.

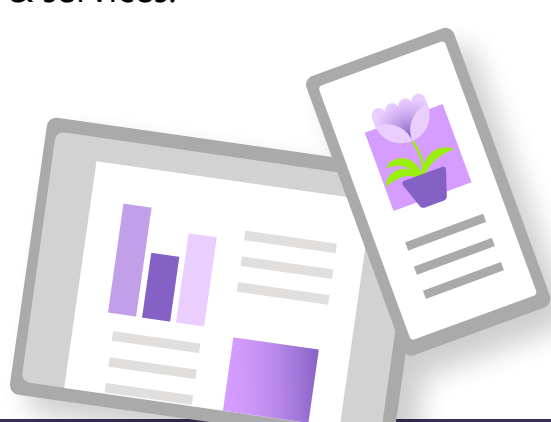


### Temporary Workers

**Project-based**  
Contractors who need secure, project-based access to company resources on desktops, laptops, or virtual endpoints.

**Short-term**  
Seasonal employees hired to meet planned surges in demand or production and need Win32 apps & cloud services.

**Elastic**  
Interns, students or trainees who need secure, FTE-like access to company resources for a limited time.



<sup>1</sup>Edelman Data x Intelligence, "The Work Trend Index." The survey was conducted by an independent research firm among 31,092 full-time employed or self-employed workers across 31 markets between January 12, 2021 to January 25, 2021.