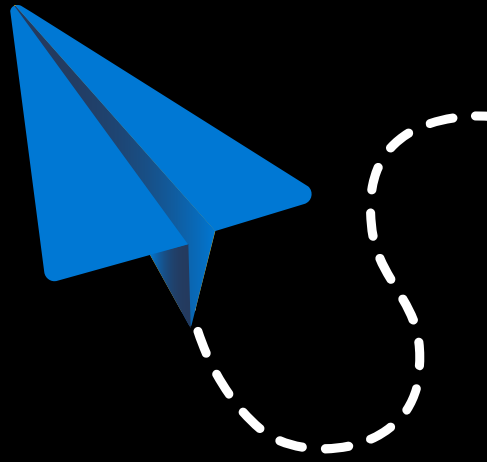


How Microsoft drives responsible AI



Microsoft is committed to the advancement of AI driven by ethical principles that put people first



“The most critical next step in our pursuit of AI is to agree on an ethical and empathetic framework for its design.”

Satya Nadella
CEO of Microsoft

Microsoft’s holistic approach to responsible AI



Principles

We have established guiding principles for how AI should be developed, used, and maintained.



Practices

Our AI governance teams are tasked with developing policies and guidance, documenting best practices, helping address issues that arise, and educating employees about responsible AI.



Tools

Our data scientists and developers use tools and resources that make it easier to spot and mitigate potential issues when training and maintaining ML models.

Responsible AI principles in practice at Microsoft



Innovating responsibly

We are putting our principles into practice by taking a people-centered approach to the research, development, and deployment of AI. To achieve this, we embrace diverse perspectives, continuous learning, and agile responsiveness as AI technology evolves.

Empowering others

We are helping organizations cultivate a responsible AI-ready culture throughout their businesses and put principles into place from implementation to governance with practices, tools, and technologies built on multidisciplinary research, shared learning, and leading innovation.

Fostering positive impact

We are committed to ensuring AI technology has a lasting positive impact for everyone by helping to shape public policy, contributing to industry working groups, and empowering those working to address society's greatest challenges through out AI for Good initiative.

Microsoft’s core AI practices



Fairness

AI systems should treat all people fairly



Reliability and safety

AI systems should perform reliably and safely



Privacy and security

AI systems should be secure and respect privacy



Inclusiveness

AI systems should empower everyone and engage people



Transparency

AI systems should be understandable



Accountability

People should be accountable for AI systems

Microsoft’s AI Toolkit

Microsoft’s Responsible AI dashboard is a single pane of glass to operationalize responsible AI, available on open source and Azure Machine Learning. It enables the practitioners to assess and debug machine learning models and improve product quality.

