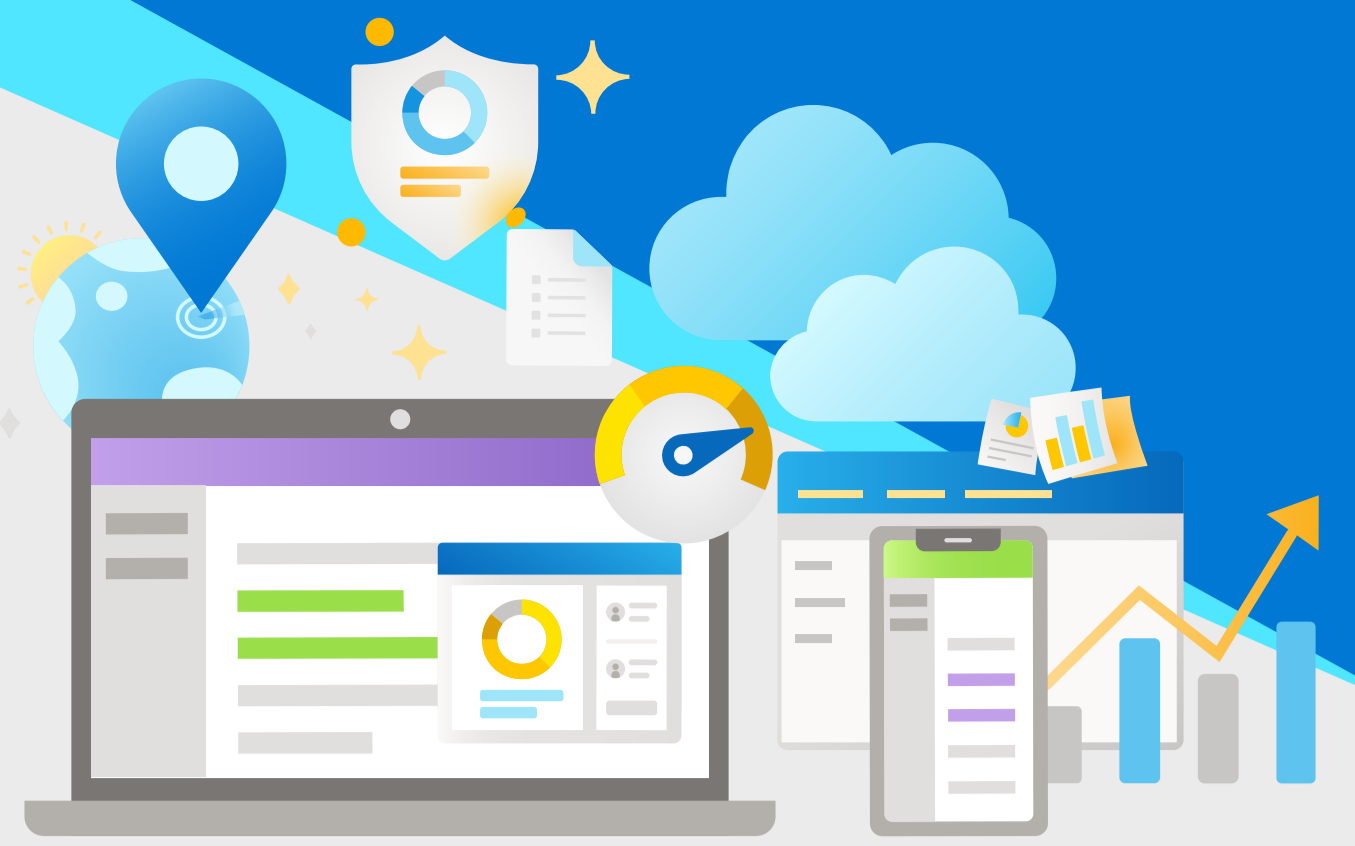


Get industry-leading performance with SQL on Windows Server on Azure



Experience up to

3.6x¹

faster performance of SQL server on Azure

...and save up to

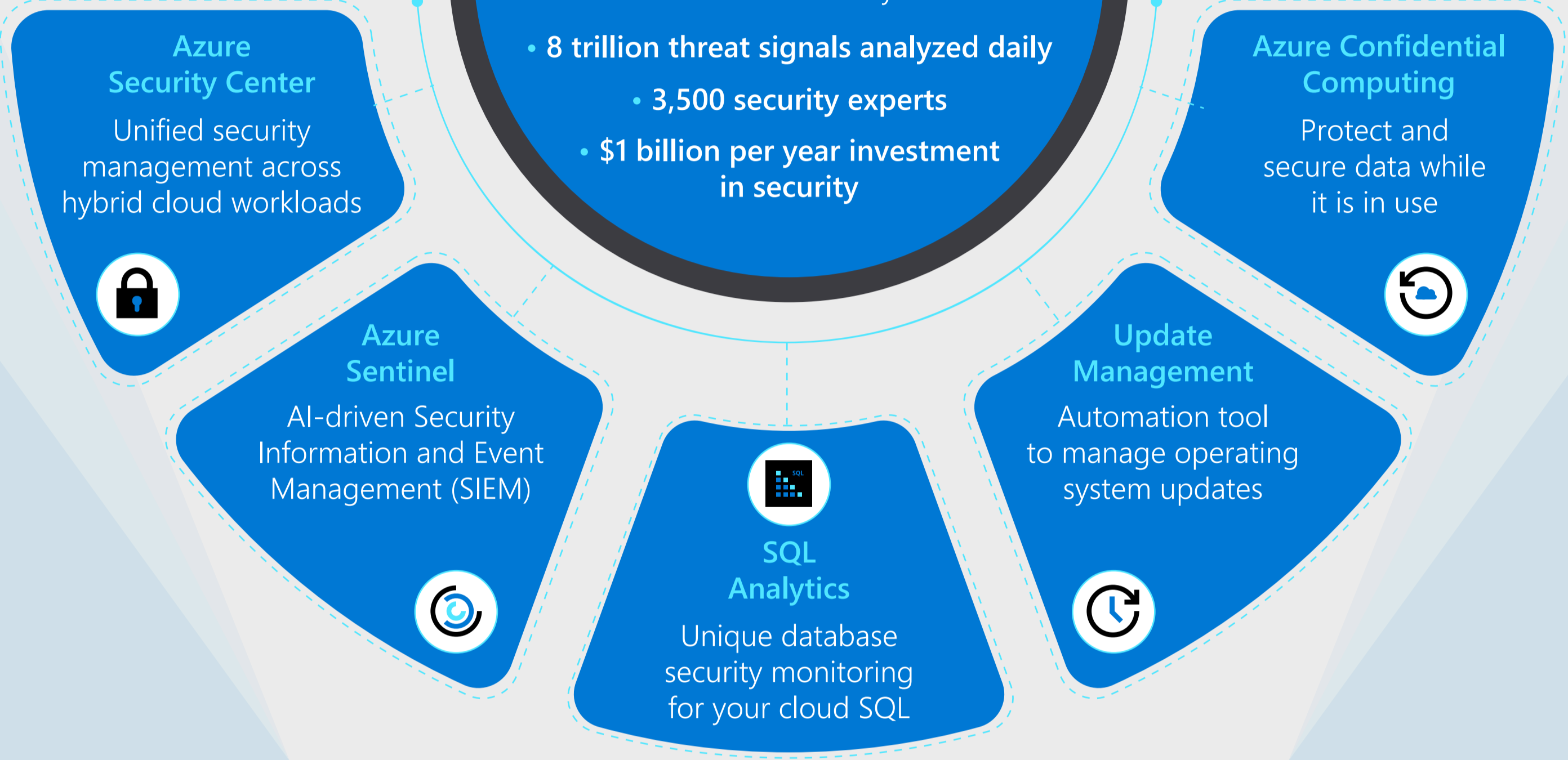
84%¹

compared to AWS

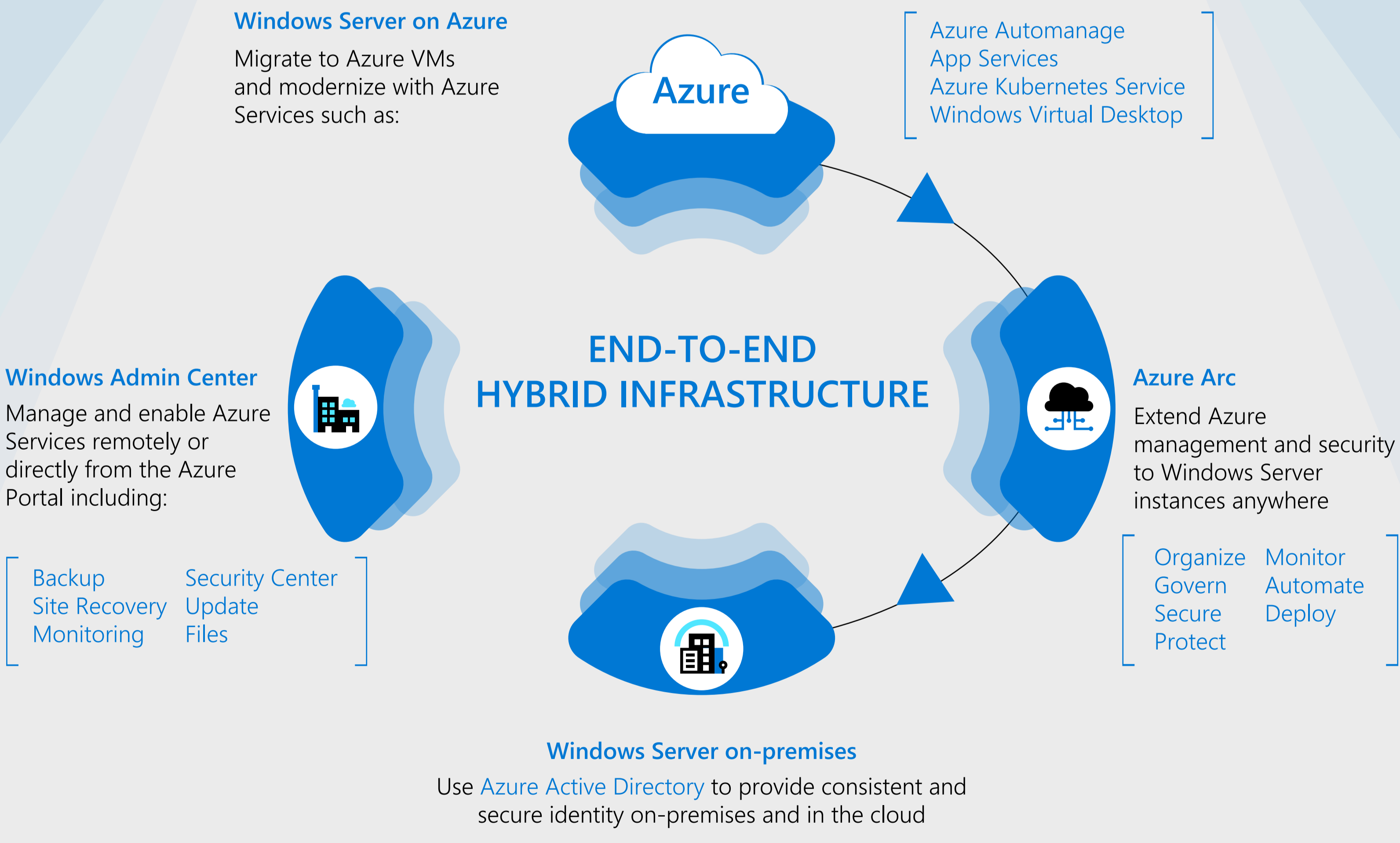
Protect apps, data, and IT workloads in Azure

Windows Server offers best-in-class security with built-in protection in Windows Server VMs and Azure Security Center

- 8 trillion threat signals analyzed daily
- 3,500 security experts
- \$1 billion per year investment in security



Take advantage of cloud innovations for on-premises workloads



[Azure Migration Program](#) |
 [Free Migration Tools](#) |
 [Free Cost Optimization Tools](#)

Learn more by downloading the Windows Server Migration Guide
<https://aka.ms/WindowsServerMigrationGuide>

...and the Ultimate Guide to Windows Server on Azure
<https://aka.ms/UltimateGuide>

[1] Price-performance claims based on data from a study commissioned by Microsoft and conducted by GigaOm in February 2020. The study compared price performance between SQL Server 2019 Enterprise Edition on Windows Server 2019 Datacenter edition in Azure E32as_v4 instance type with P30 Premium SSD Disks and the SQL Server 2019 Enterprise Edition on Windows Server 2019 Datacenter edition in AWS EC2 r5a.8xlarge instance type with General Purpose (gp2) volumes. Benchmark data is taken from a GigaOm Analytic Field Test derived from a recognized industry standard, TPC Benchmark™ E (TPC-E). The Field Test does not implement the full TPC-E benchmark and as such is not comparable to any published TPC-E benchmarks. Prices are based on publicly available US pricing in West US for SQL Server on Azure Virtual Machines and Northern California for AWS EC2 as of January 2020. The pricing incorporates three-year reservations for Azure and AWS compute pricing, and Azure Hybrid Benefit for SQL Server and Azure Hybrid Benefit for Windows Server and License Mobility for SQL Server in AWS, excluding Software Assurance costs. Actual results and prices may vary based on configuration and region.